

T-Frame Single Row Mono-pitch Solar Carport

The FlexiSolar T-Frame Solar Carport combines minimum ground footprint with heavy duty construction. Vertical posts are positioned up to 7.5m apart with a typical 3 bay span.

The T-Frame Single Row Mono-pitch carport is a versatile solution, with a construction that allows for unhindered opening of car doors.

Mono-pitch carports are ideal for south facing locations and optimise peak solar generation. Sites facing east/ west can benefit from the T-Frame Duo-pitch angled carport construction.

All initial prices are quoted for our standard galvanised carport structure. Additional options include:

- Powder coat finish
- Boxing and plating
- Cable management
- Guttering
- Water management
- LED motion controlled lighting
- CCTV installation
- Advertising and branding
- EV charging points
- Energy storage

Typical Structural Specifications

Min height from 2.2m
 Carpark dimensions: 2.4m x 4.8m
 Roof dimensions 2.4x 5.5m
 Size and roof pitch as per site requirements

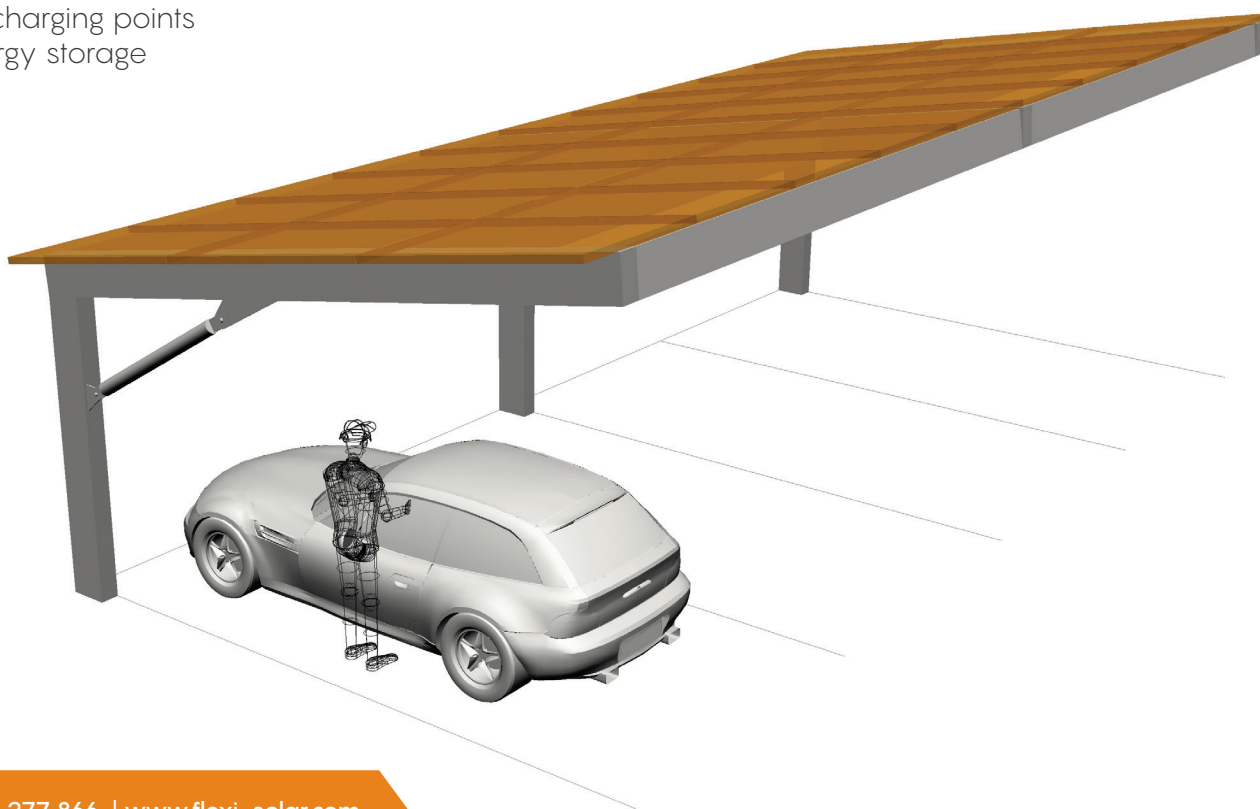
Typical PV Solar Specifications

Rooftop area / space: 12.5m²
 Solar PV / car parking bay: 2.0kWp

Building Codes

- Building Regulations Part A
- Structure Specified to Execution Class 2 (EX2) in accordance with BS EN 1090
- BE EN 1090: Execution of Steel Structures
- BS EN 1991-1-1: Actions on structures
- BS EN 1991-1-3: Snow Loads
- BS EN 1991-1-4: Wind Loads
- BS EN 1991-7: Accidental Actions
- BS EN 1993-1: Design of Steel Structures
- BS 8004: Foundations
- BS 8110-1: Structural Use of concrete

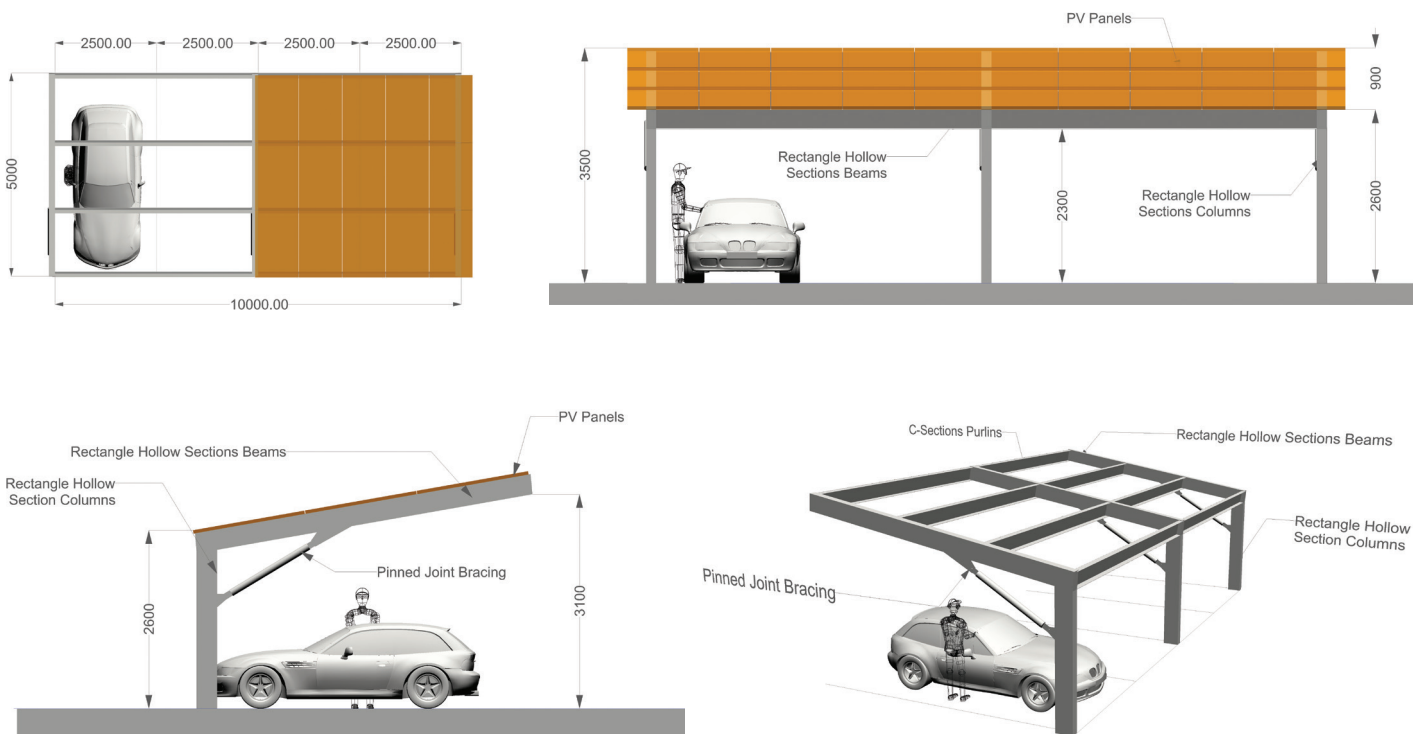
FlexiSolar carport structures are CE marked according to current requirements and are compatible with all major PV fixings and panel manufacturers.



We are energy and EV solution providers specialising in the integration of solar PV, commercial carports, EV charge-points and battery storage

The large scale generation of power through solar energy is an important consideration for the future. FlexiSolar's solar carports utilise existing parking areas to generate power without sacrificing valuable land resources.

FlexiSolar structures are not designed to set sizes or material specifications - our integrated solar carport systems are uniquely designed to best fit the requirements and scope of each site. The specifications shown in this datasheet are for illustrative purposes only.



To understand how FlexiSolar integrated carports could benefit your business and offer a solution to your future needs, call 01480 277 866 or email sales@flexi-solar.com www.flexi-solar.com